

PPM & *ViaLite* Fibre Optic Cleaning Kit

Optical Safety



The PPM and *ViaLite Communications* range of **singlemode** transmitter modules contain laser diode sources operating at 1270nm to 1610nm. These devices are rated under EN 60825-1:2014 “Safety of laser products – Part 1: Equipment classification and requirements” as CLASS 1 radiation emitting devices.

The PPM and *ViaLite Communications* range of **multimode** transmitter modules contain laser diode sources operating at 850nm. These devices are rated under EN 60825-1:2014 “Safety of laser products – Part 1: Equipment classification and requirements” as CLASS 1 radiation emitting devices.

When operating the equipment note the following:

- Never look into the end of an optical fibre or connector directly or by reflection either with the naked eye or through an optical instrument.
- Never leave equipment with radiating bare fibres accessible – always cap the connectors.
- Do not remove equipment covers when operating.

Adjustment, maintenance and repair of the equipment should only be carried out by suitably qualified personnel.

Cleaning Procedure

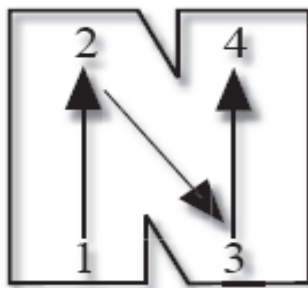
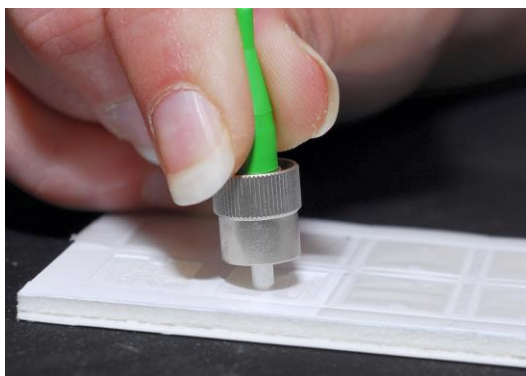
Fibre optic connectors are more sensitive to damage and contamination than electrical connectors. In order to maintain full performance from your fibre optic link system, it is necessary to take care to protect the connectors from damage and to keep them clean. The cable connectors should always be cleaned before they are used, even if they have been protected by dust caps.

When the fibre optic cables are not connected, it is essential that the cable and module connectors are protected by the dust caps provided with the system. Failure to do so may result in damage to the fibre ends, which are critical to the system performance.

Use cleaning card PPM part 54034.

1. Peel the plastic cover from an unused “N”.
2. Hold the connector between your thumb and forefinger.
3. Clean the connector using firm pressure by swiping in a pendulum motion through each segment of the “N” shape, following the diagram below.

NOTE: Do not swipe over the same area twice.



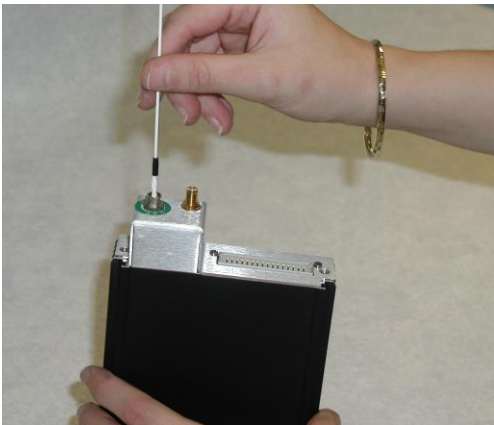
Page 1 of 2

Module Female Receptacle Cleaning

Note: Only recommended if problems are being experienced.

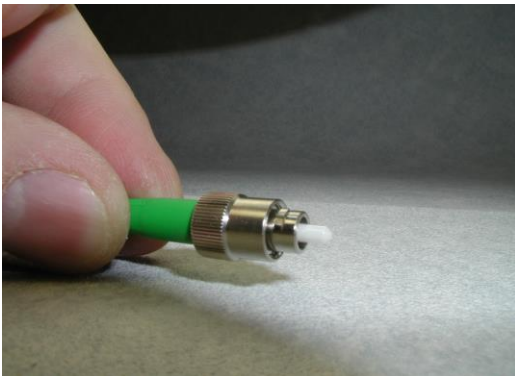
Use cleaning stick PPM part 54032.

1. Gently push the probe into the receptacle and twist around several times to dislodge any dirt.
2. Discard cleaning stick after use



1.1 Reconnecting Fibre Optic Cables

1. Locate connector keyway and hold connector with keyway vertical.



2. Insert Connector ferrule into connector feed through.
3. Ensure keyway locates into cut-out of connector feed through.
4. Tighten the connector barrel to finger tightness.

